



US008103840B2

(12) **United States Patent**
Hwang et al.

(10) **Patent No.:** **US 8,103,840 B2**
(45) **Date of Patent:** **Jan. 24, 2012**

(54) **SNAPSHOT MECHANISM AND METHOD THEREOF**

(56) **References Cited**

(75) Inventors: **Wen-Shyang Hwang**, Kaohsiung County (TW); **Ching-Hung Lin**, Kaohsiung County (TW); **Jun-Yao Wang**, Tainan (TW); **Chin-Pei Su**, Kaohsiung County (TW); **Tsung-Lin Tsai**, Kaohsiung (TW)

U.S. PATENT DOCUMENTS

6,594,744	B1	7/2003	Humlicek et al.
6,771,843	B1	8/2004	Huber et al.
7,636,814	B1 *	12/2009	Karr et al. 711/143
2002/0143764	A1 *	10/2002	Martin et al. 707/8
2003/0159007	A1 *	8/2003	Sawdon et al. 711/154
2005/0182797	A1	8/2005	Adkins et al.
2006/0047925	A1 *	3/2006	Perry 711/162
2006/0047999	A1 *	3/2006	Passerini et al. 714/6

(73) Assignee: **Industrial Technology Research Institute**, Hsinchu (TW)

* cited by examiner

(*) Notice: Subject to any disclaimer, the term of this patent is extended or adjusted under 35 U.S.C. 154(b) by 667 days.

Primary Examiner — Reginald Bragdon

Assistant Examiner — Aracelis Ruiz

(74) *Attorney, Agent, or Firm* — Jianq Chyun IP Office

(21) Appl. No.: **11/567,212**

(57) **ABSTRACT**

(22) Filed: **Dec. 6, 2006**

A snapshot mechanism and a method thereof used in a data processing system are provided to backup snapshot data. The snapshot mechanism includes a snapshot storage unit and a buffer storage unit, wherein the snapshot storage unit is used as a unit for storing data generated after a target storage unit snapshots data and accordingly generating a plurality of snapshot management data. In addition, the buffer storage unit temporarily stores new data and flushes the data to the target storage unit in predetermined time interval. According to the snapshot management data, the target storage unit can be rolled back or rolled forward to the status before a predetermined time.

(65) **Prior Publication Data**

US 2007/0271431 A1 Nov. 22, 2007

(30) **Foreign Application Priority Data**

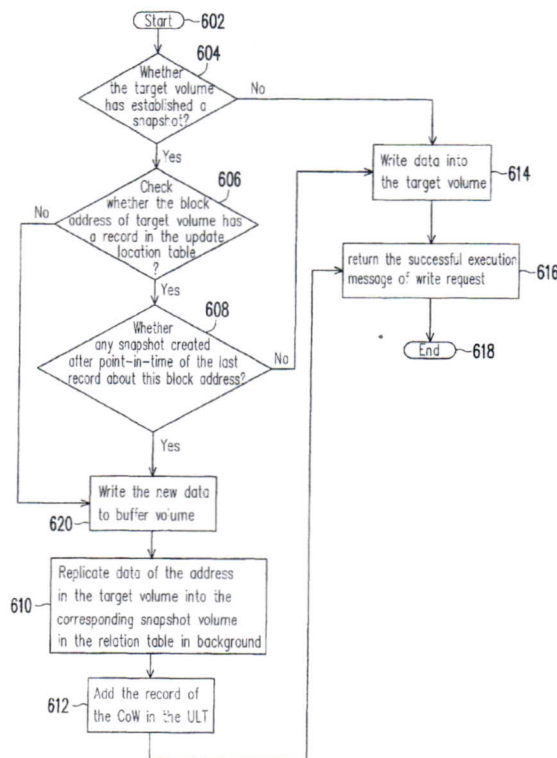
May 17, 2006 (TW) 95117415 A

(51) **Int. Cl.**
G06F 12/00 (2006.01)

(52) **U.S. Cl.** **711/162; 711/E12.103**

(58) **Field of Classification Search** None
See application file for complete search history.

20 Claims, 12 Drawing Sheets



P11/60083/LIS